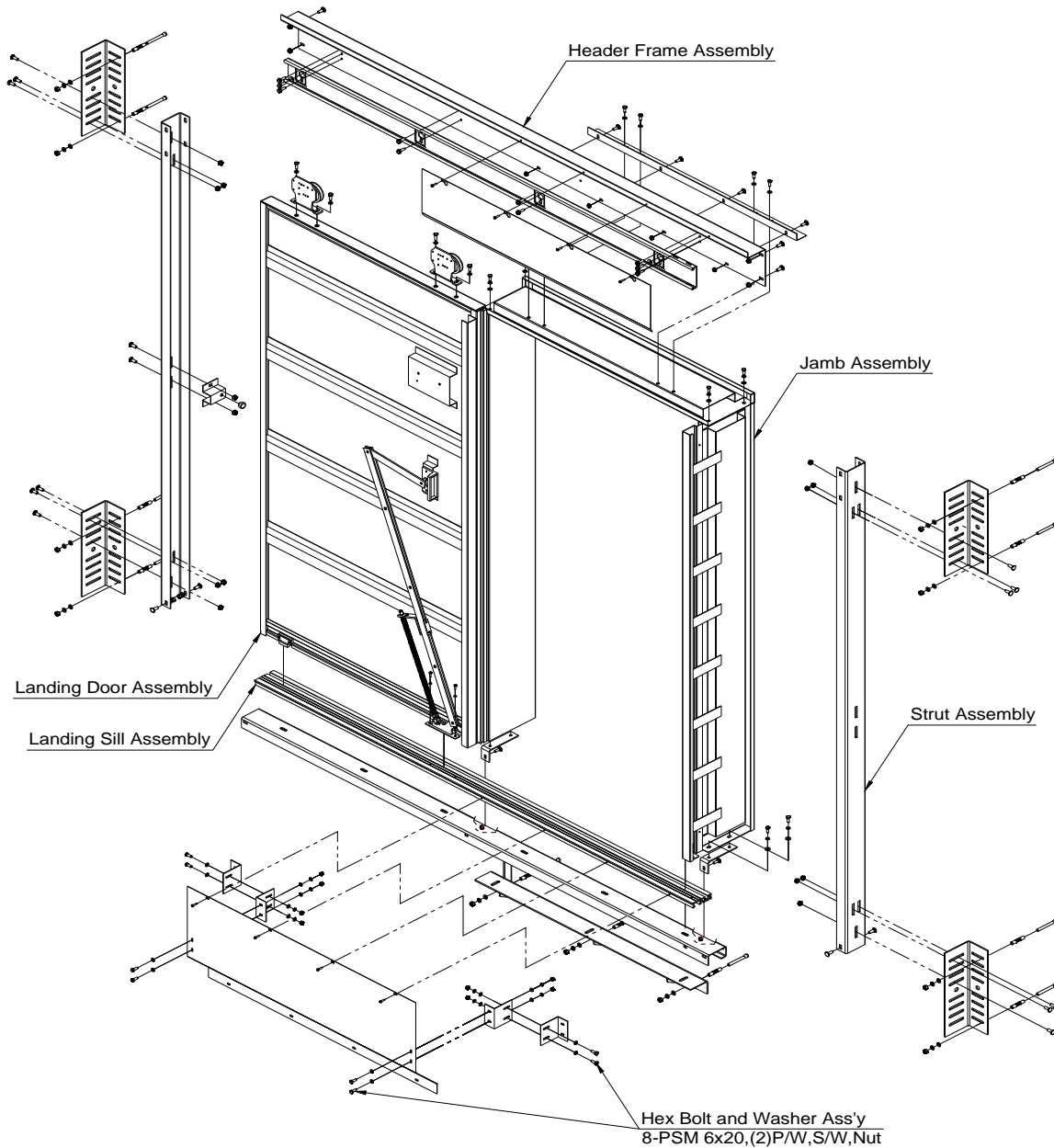


<b>HM TEC</b>	<b>INSTALLATION MANUAL</b>	Document No.:	TN-M01-0001
		Date:	2-Mar-09
	<b>MRL - ENTRANCE ASSEMBLY</b>	Name:	N.R.Kim
		page:	6-01

## 6. ENTRANCE ASSEMBLY

### 6-1. Single Speed Side Sliding Door

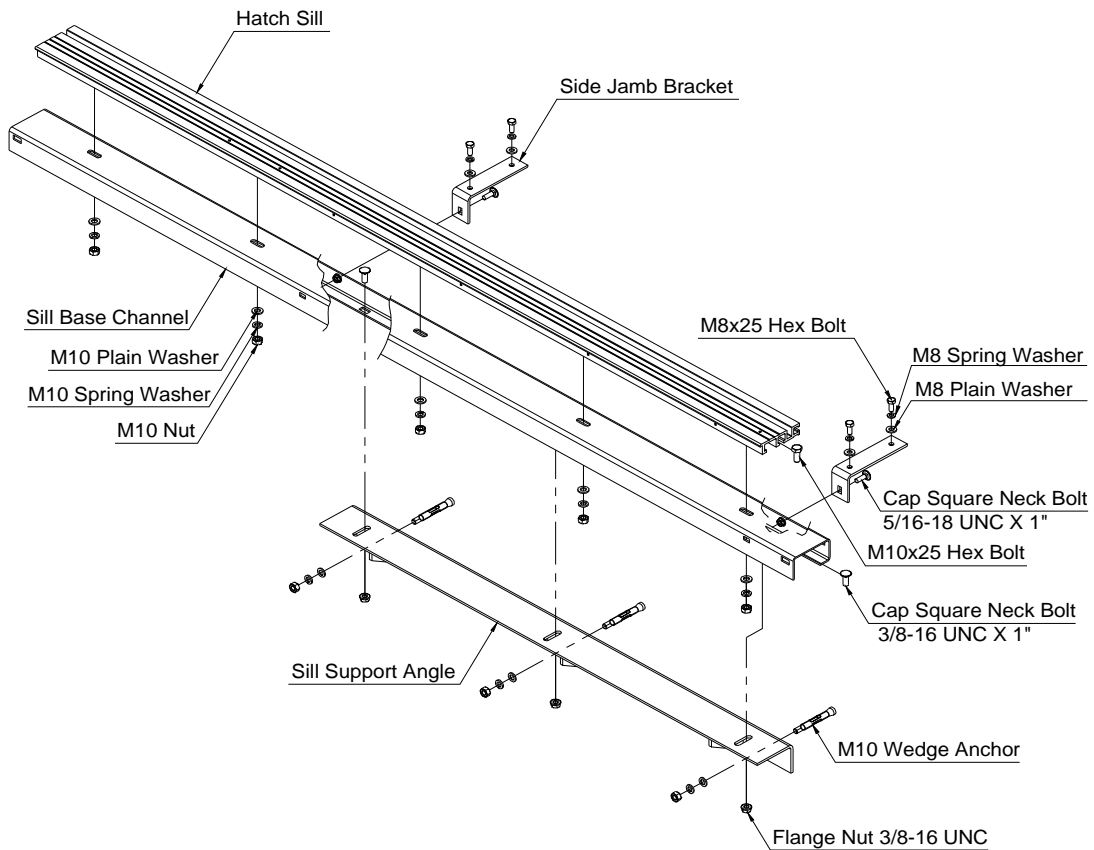
6-1-1. Entrance Arrangement (See Fig. 6-1-1.)



**Fig. 6-1-1. ENTRANCE ARRANGEMENT (SS)**

<b>HM TEC</b>	<b>INSTALLATION MANUAL</b>	Document No.:	TN-M01-0001
		Date:	2-Mar-09
	<b>MRL - ENTRANCE ASSEMBLY</b>	Name:	N.R.Kim
		page:	6-02

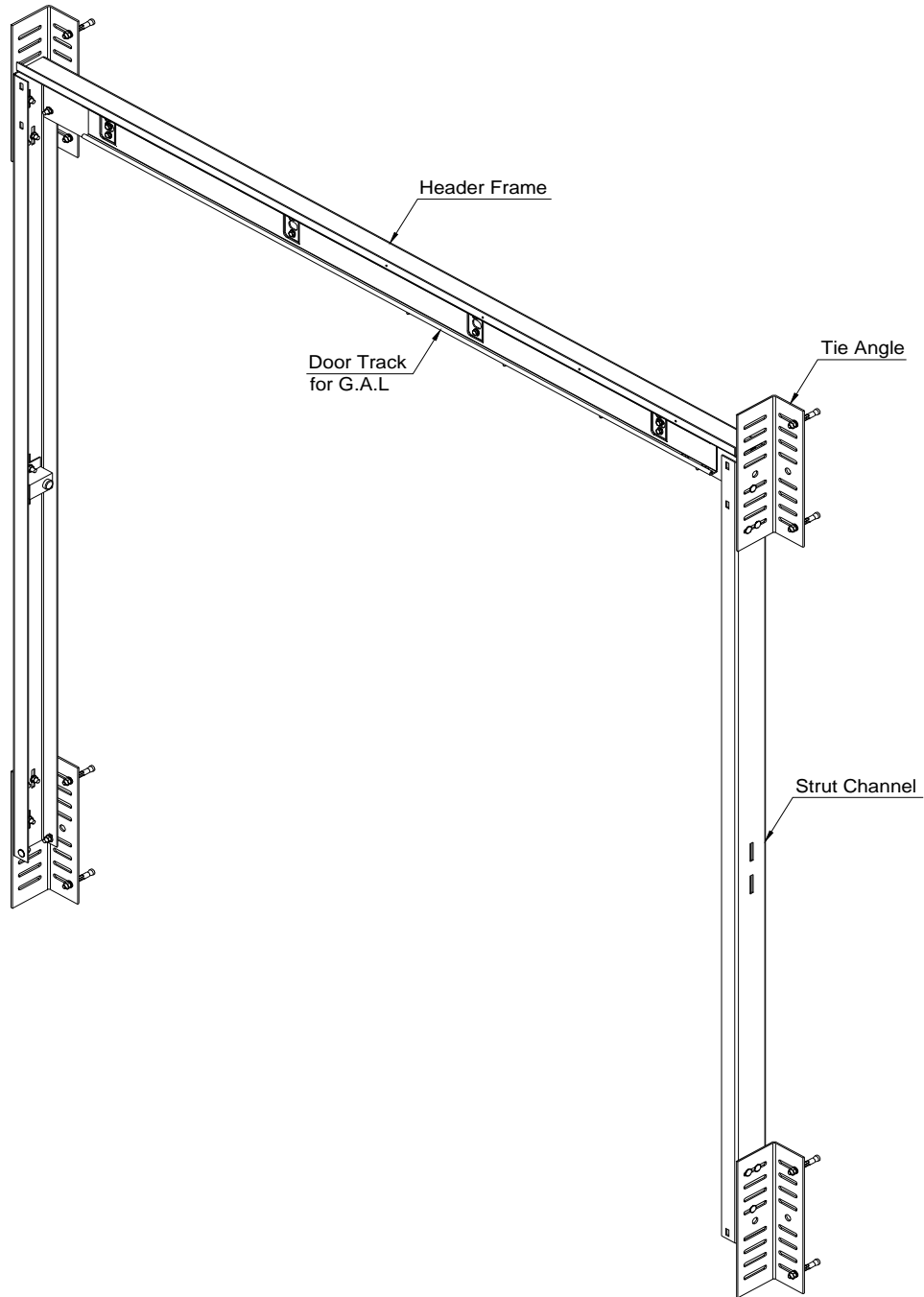
6-1-2. Landing Sill Assembly (See Fig. 6-1-2.)



**Fig. 6-1-2. LANDING SILL ASSEMBLY (SS)**

<b>HM TEC</b>	<b>INSTALLATION MANUAL</b>	Document No.:	TN-M01-0001
		Date:	2-Mar-09
	<b>MRL - ENTRANCE ASSEMBLY</b>	Name:	N.R.Kim
		page:	6-03

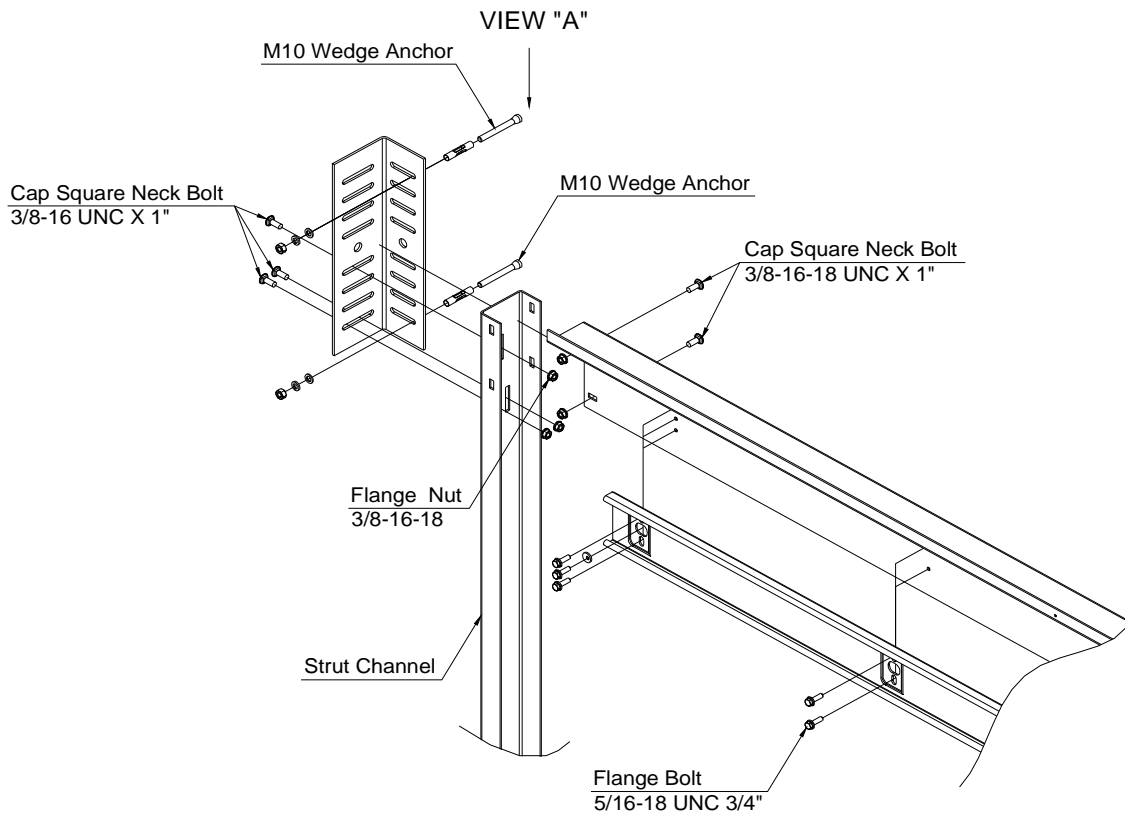
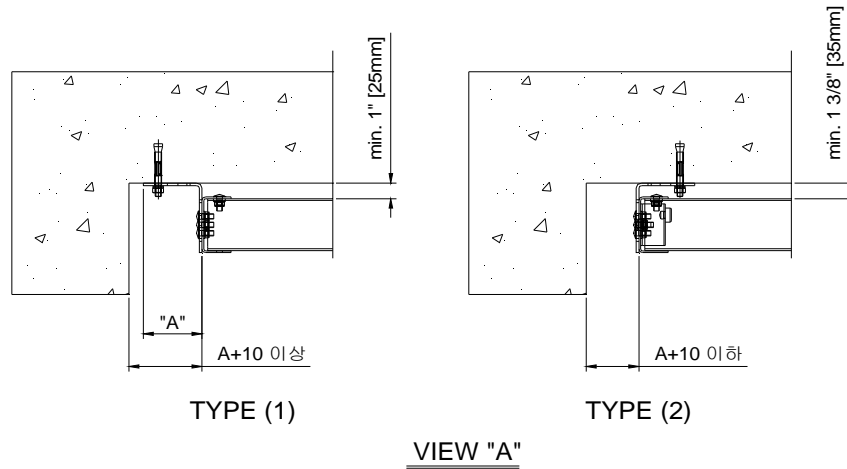
6-1-3. Strut and Header Frame Assembly (See Fig. 6-1-3.)



**Fig. 6-1-3. STRUT AND HEADER FRAME ASSEMBLY (SS)**

<b>HM TEC</b>	<b>INSTALLATION MANUAL</b>	Document No.:	TN-M01-0001
		Date:	2-Mar-09
	<b>MRL - ENTRANCE ASSEMBLY</b>	Name:	N.R.Kim
		page:	6-04

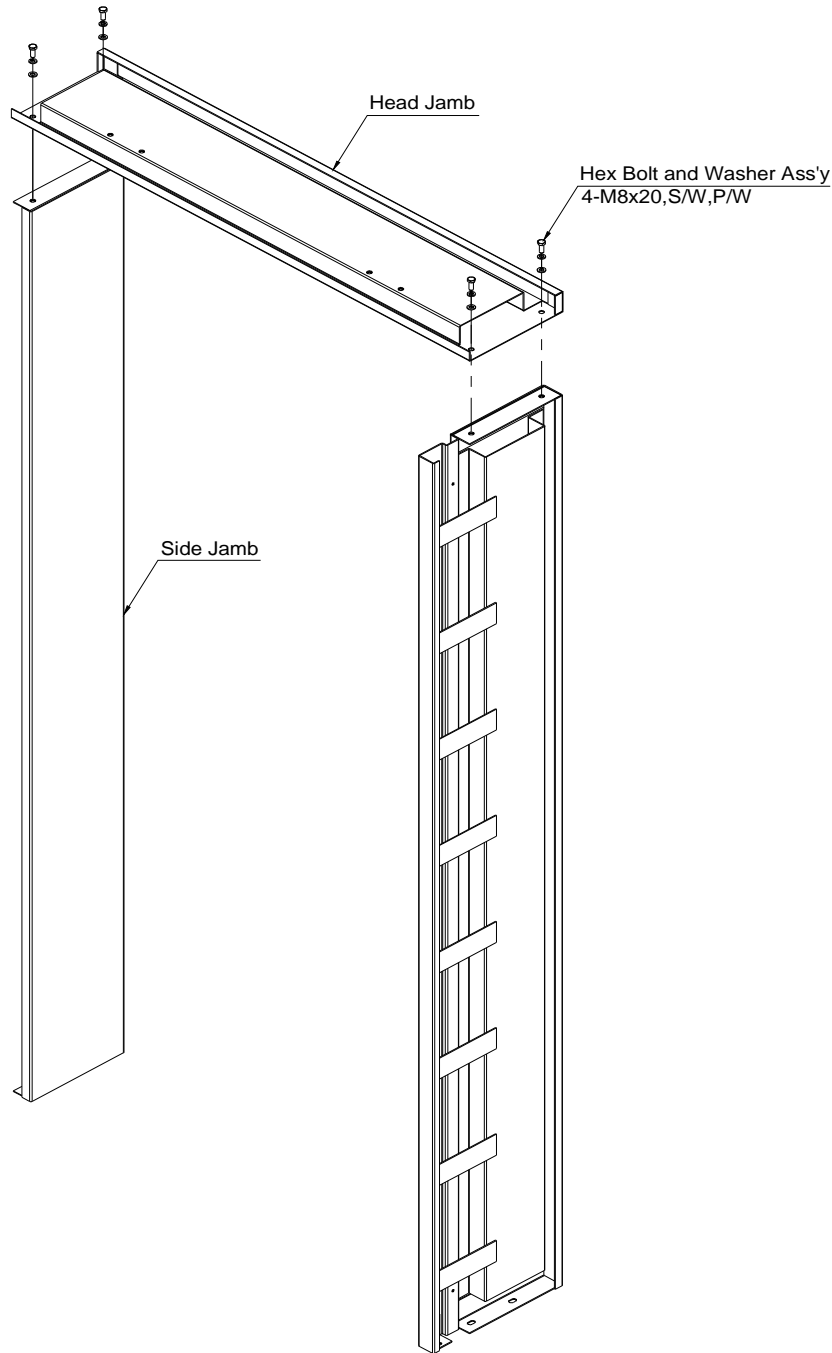
6-1-4. Strut and Header Frame Detail (See Fig. 6-1-4.)



**Fig. 6-1-4. STRUT AND HEADER FRAME DETAIL**

<b>HM TEC</b>	<b>INSTALLATION MANUAL</b>	Document No.:	TN-M01-0001
		Date:	2-Mar-09
	<b>MRL - ENTRANCE ASSEMBLY</b>	Name:	N.R.Kim
		page:	6-05

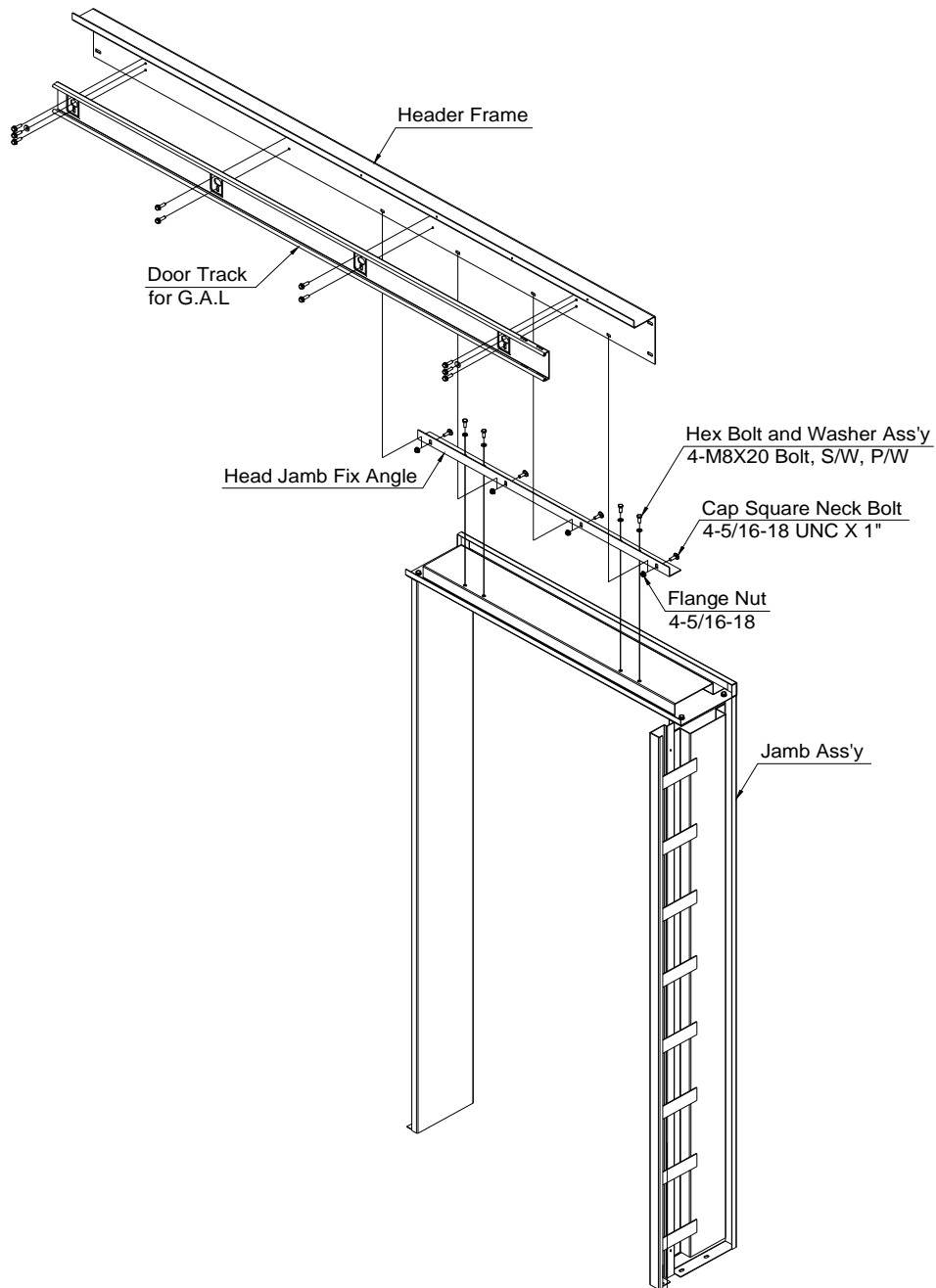
6-1-5. Jamb Assembly (See Fig. 6-1-5.)



**Fig. 6-1-5. JAMB ASSEMBLY (SS)**

<b>HM TEC</b>	<b>INSTALLATION MANUAL</b>	Document No.:	TN-M01-0001
		Date:	2-Mar-09
	<b>MRL - ENTRANCE ASSEMBLY</b>	Name:	N.R.Kim
		page:	6-06

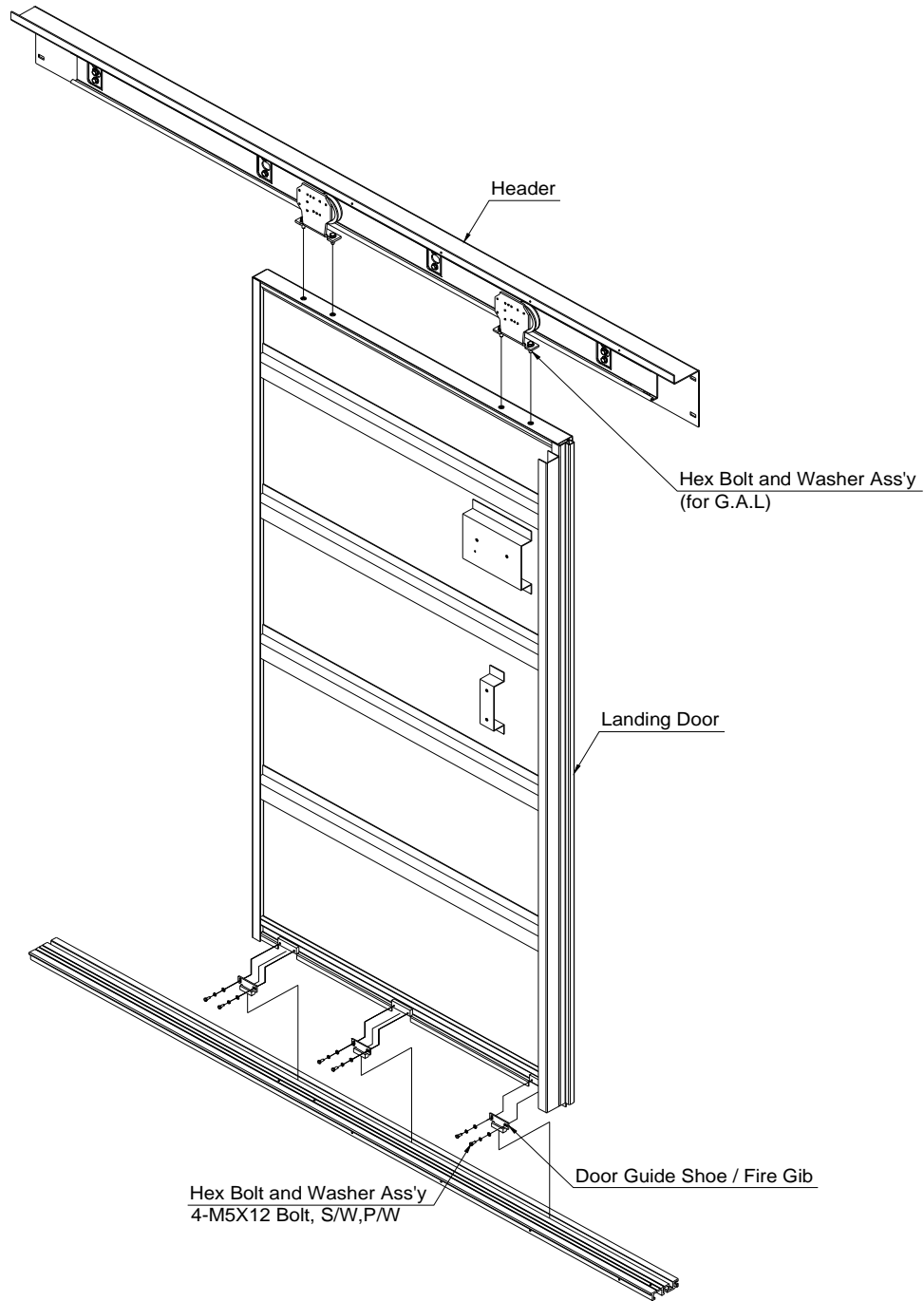
6-1-6. Header Frame and Jamb Fixing (See Fig. 6-1-6.)



**Fig. 6-1-6. HEADER FRAME AND JAMB FIXING (SS)**

<b>HM TEC</b>	<b>INSTALLATION MANUAL</b>	Document No.:	TN-M01-0001
		Date:	2-Mar-09
	<b>MRL - ENTRANCE ASSEMBLY</b>	Name:	N.R.Kim
		page:	6-07

6-1-7. Landing Door Assembly (See Fig. 6-1-7.)

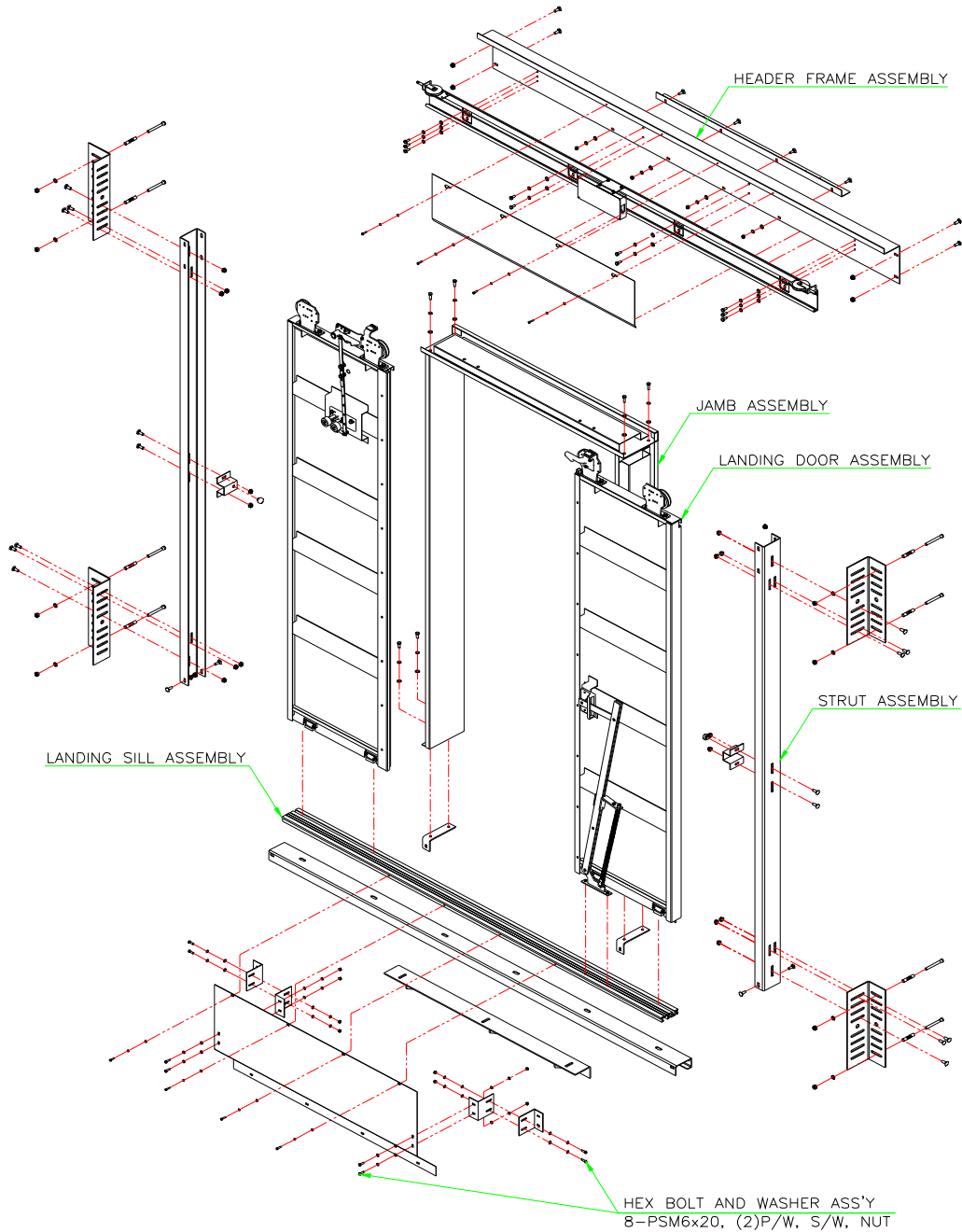


**Fig. 6-1-7. LANDING DOOR ASSEMBLY (SS)**

HM TEC	INSTALLATION MANUAL	Document No.:	TN-M01-0001
		Date:	8-Jan-10
	MRL - ENTRANCE ASSEMBLY	Name:	N.R.Kim
		page:	6-08

## 6-2. Center Parting Door

6-2-1. Entrance Arrangement (See Fig. 6-2-1.)

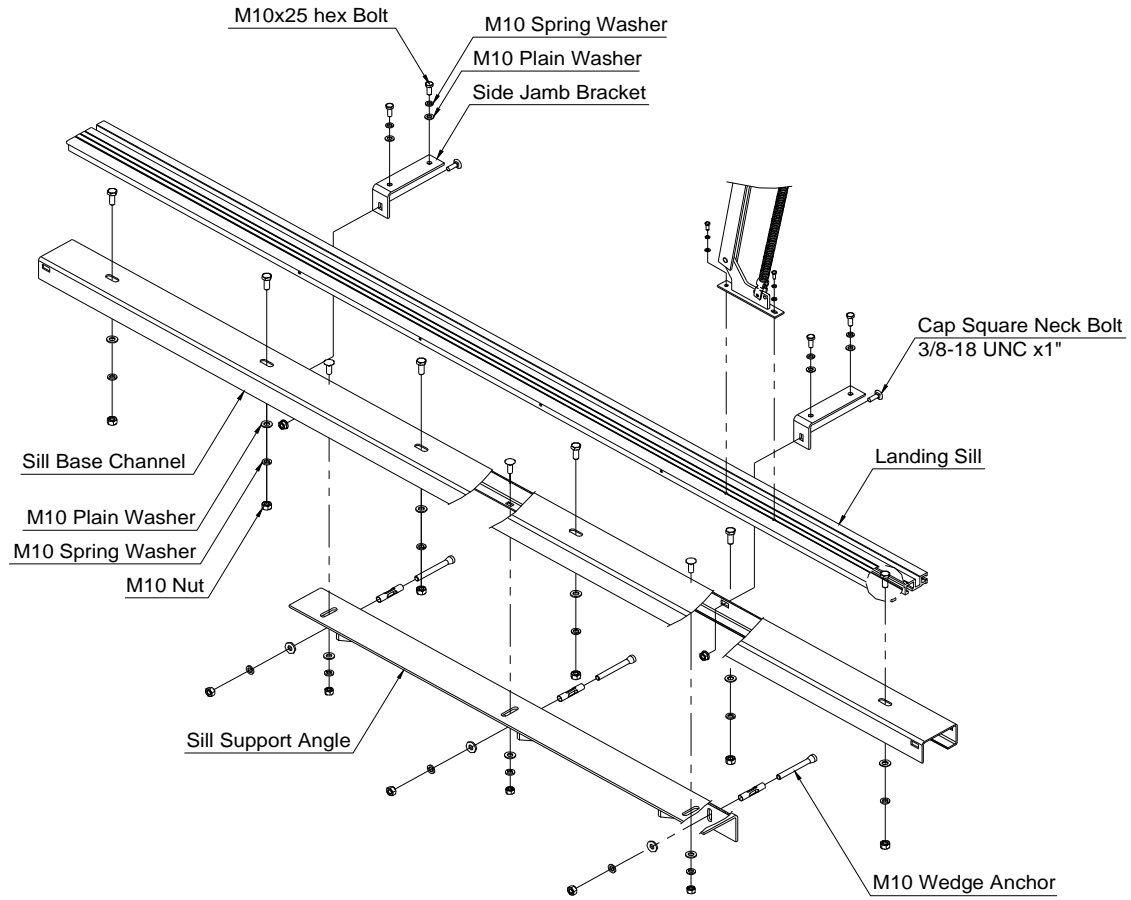


**Fig. 6-2-1. LANDING DOOR ASSEMBLY (C.P)**



<b>HM TEC</b>	<b>INSTALLATION MANUAL</b>	Document No.:	TN-M01-0001
		Date:	8-Jan-10
	<b>MRL - ENTRANCE ASSEMBLY</b>	Name:	N.R.Kim
		page:	6-09

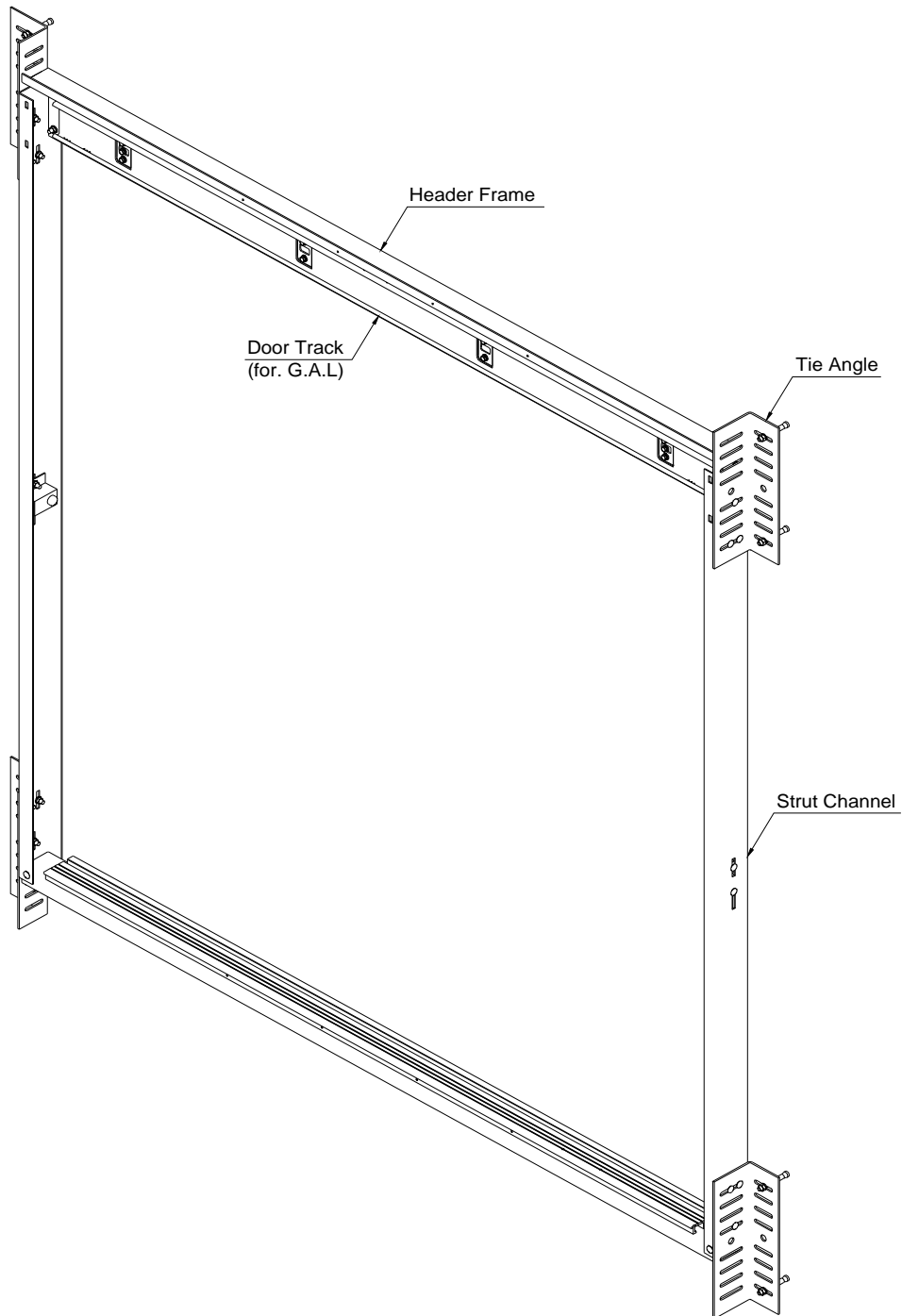
6-2-2. Landing Sill Assembly (See Fig. 6-2-2.)



**Fig. 6-2-2. LANDING DOOR ASSEMBLY (C.P)**

<b>HM TEC</b>	<b>INSTALLATION MANUAL</b>	Document No.:	TN-M01-0001
		Date:	8-Jan-10
	<b>MRL - ENTRANCE ASSEMBLY</b>	Name:	N.R.Kim
		page:	6-10

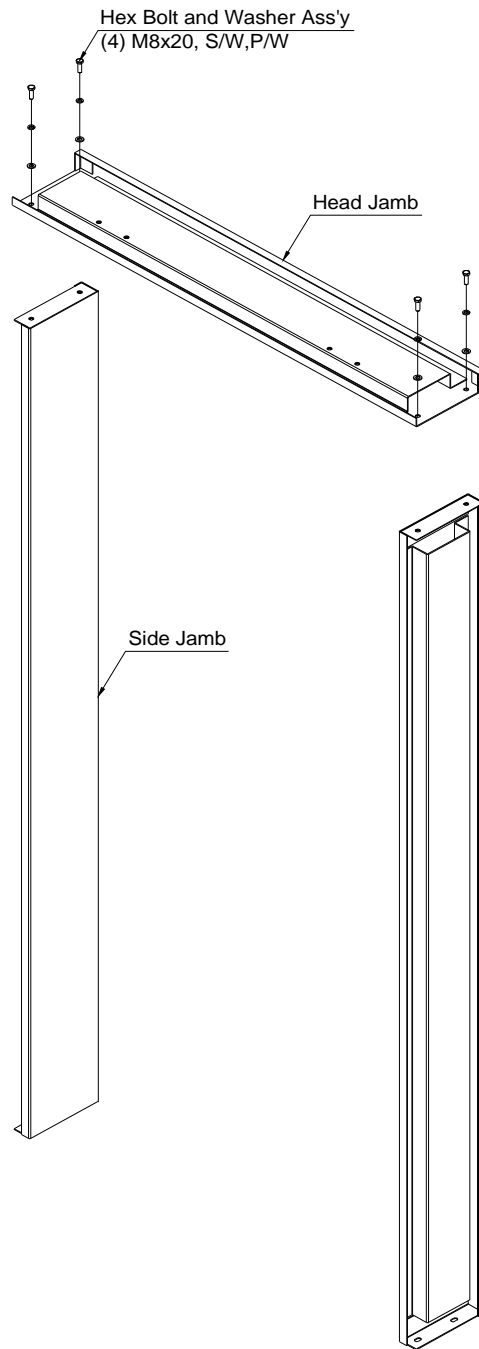
6-2-3. Strut and Header Frame Assembly (See Fig. 6-2-3.)



**Fig. 6-2-3. STRUT AND HEADER FRAME ASSEMBLY (C.P)**

<b>HM TEC</b>	<b>INSTALLATION MANUAL</b>	Document No.:	TN-M01-0001
		Date:	8-Jan-10
	<b>MRL - ENTRANCE ASSEMBLY</b>	Name:	N.R.Kim
		page:	6-11

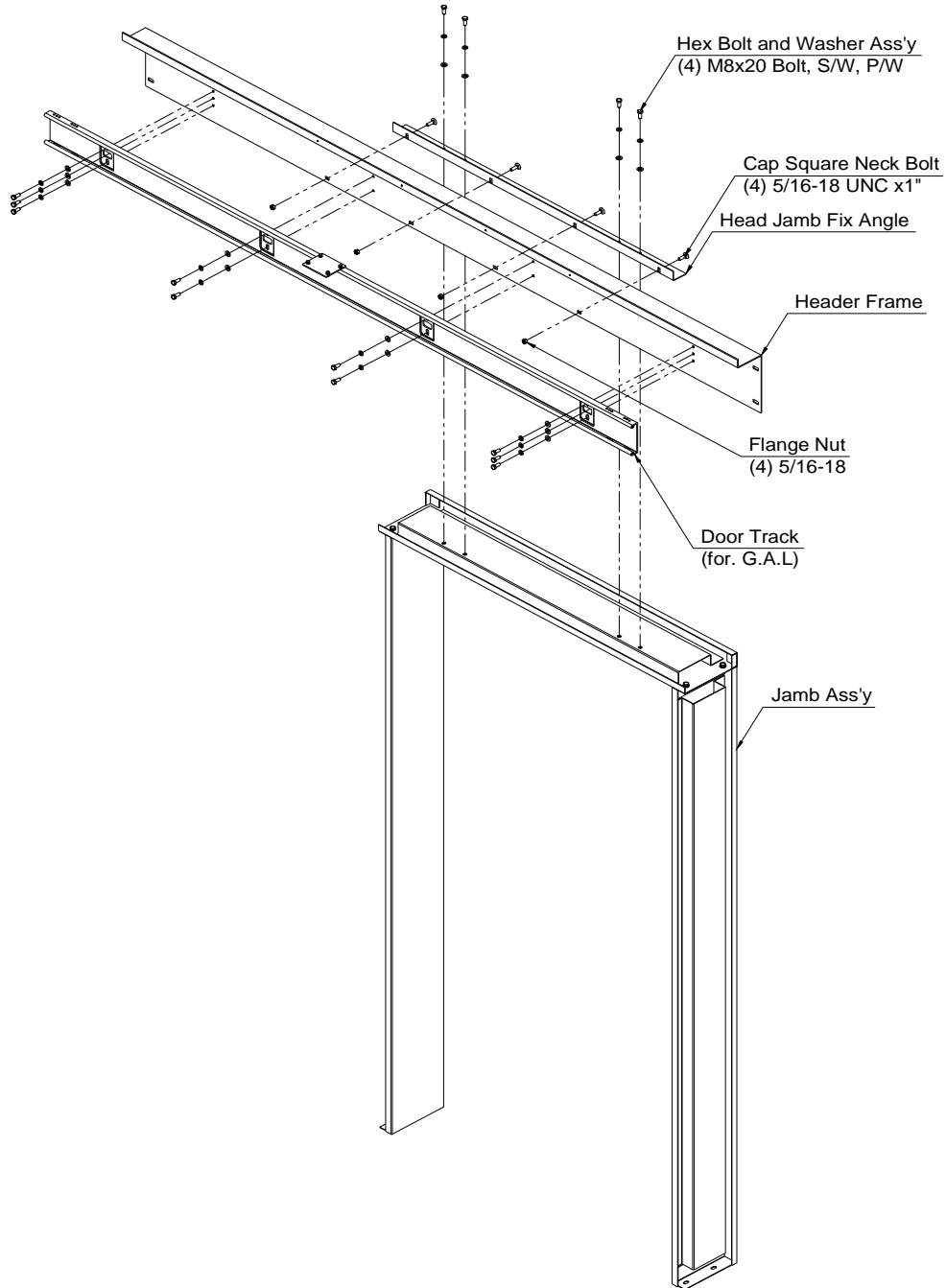
6-2-5. Jamb Assembly (See Fig. 6-2-5.)



**Fig. 6-2-5. JAMB ASSEMBLY (C.P)**

<b>HM TEC</b>	<b>INSTALLATION MANUAL</b>	Document No.:	TN-M01-0001
		Date:	8-Jan-10
	<b>MRL - ENTRANCE ASSEMBLY</b>	Name:	N.R.Kim
		page:	6-12

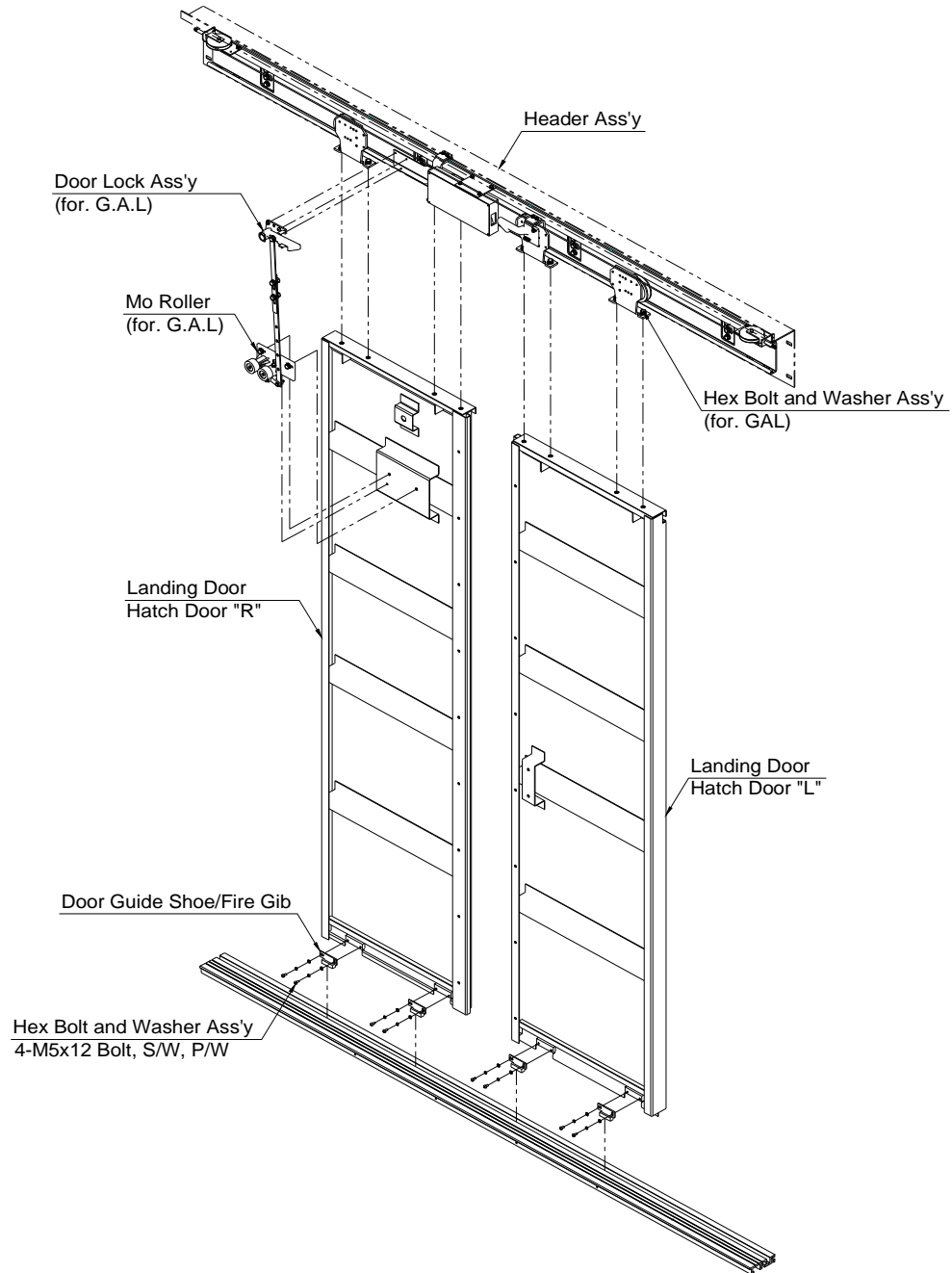
6-2-6. Header Frame and Jamb Fixing (See Fig. 6-2-6.)



**Fig. 6-2-6. HEADER FRAME AND JAMB FIXING (C.P)**

<b>HM TEC</b>	<b>INSTALLATION MANUAL</b>	Document No.:	TN-M01-0001
		Date:	8-Jan-10
	<b>MRL - ENTRANCE ASSEMBLY</b>	Name:	N.R.Kim
		page:	6-13

6-2-7. Landing Door Assembly (See Fig. 6-2-7.)

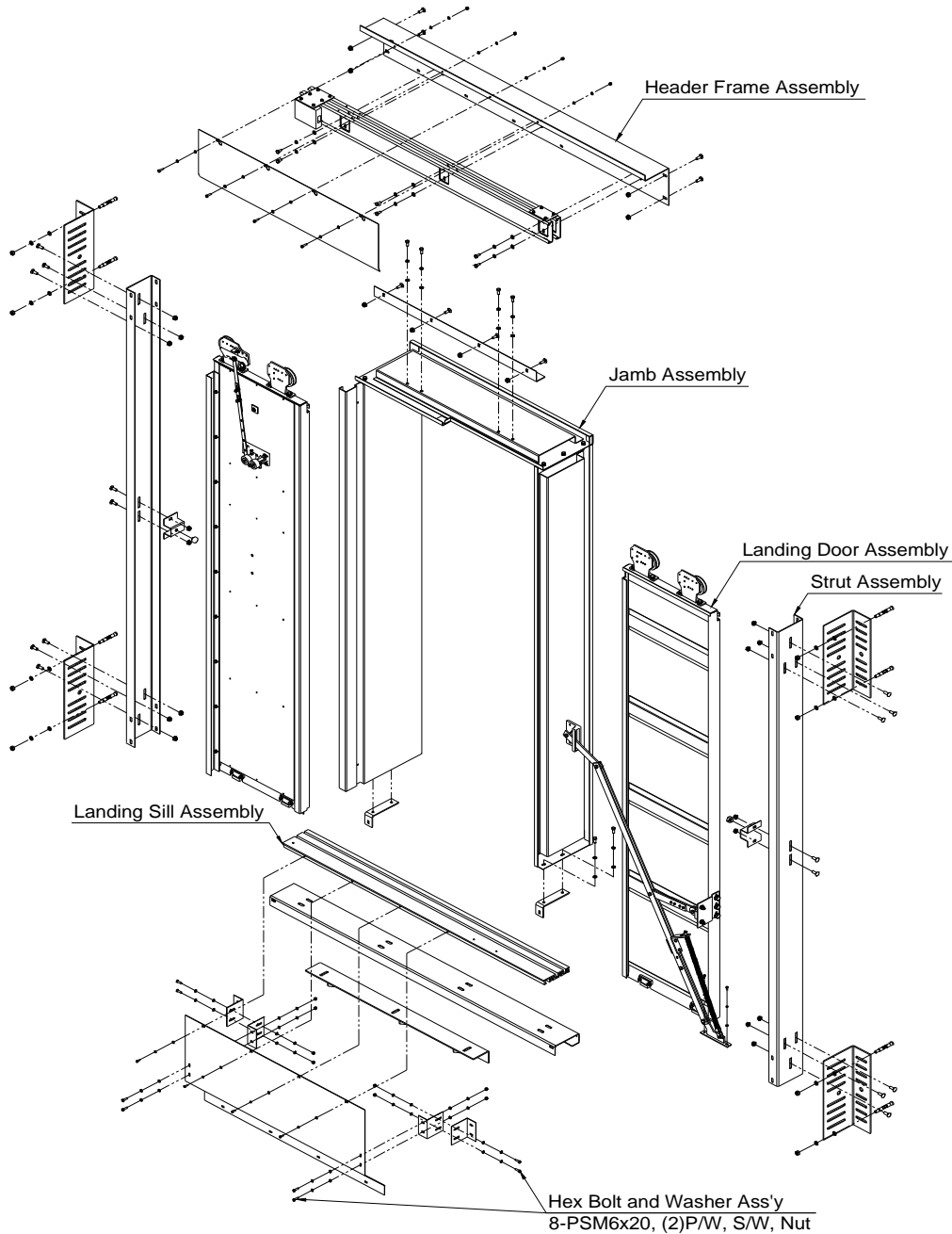


**Fig. 6-2-7. LANDING DOOR ASSEMBLY (C.P)**

<b>HM TEC</b>	<b>INSTALLATION MANUAL</b>	Document No.:	TN-M01-0001
		Date:	8-Jan-10
	<b>MRL - ENTRANCE ASSEMBLY</b>	Name:	N.R.Kim
		page:	6-14

### 6-3. Two Speed Side Sliding Door

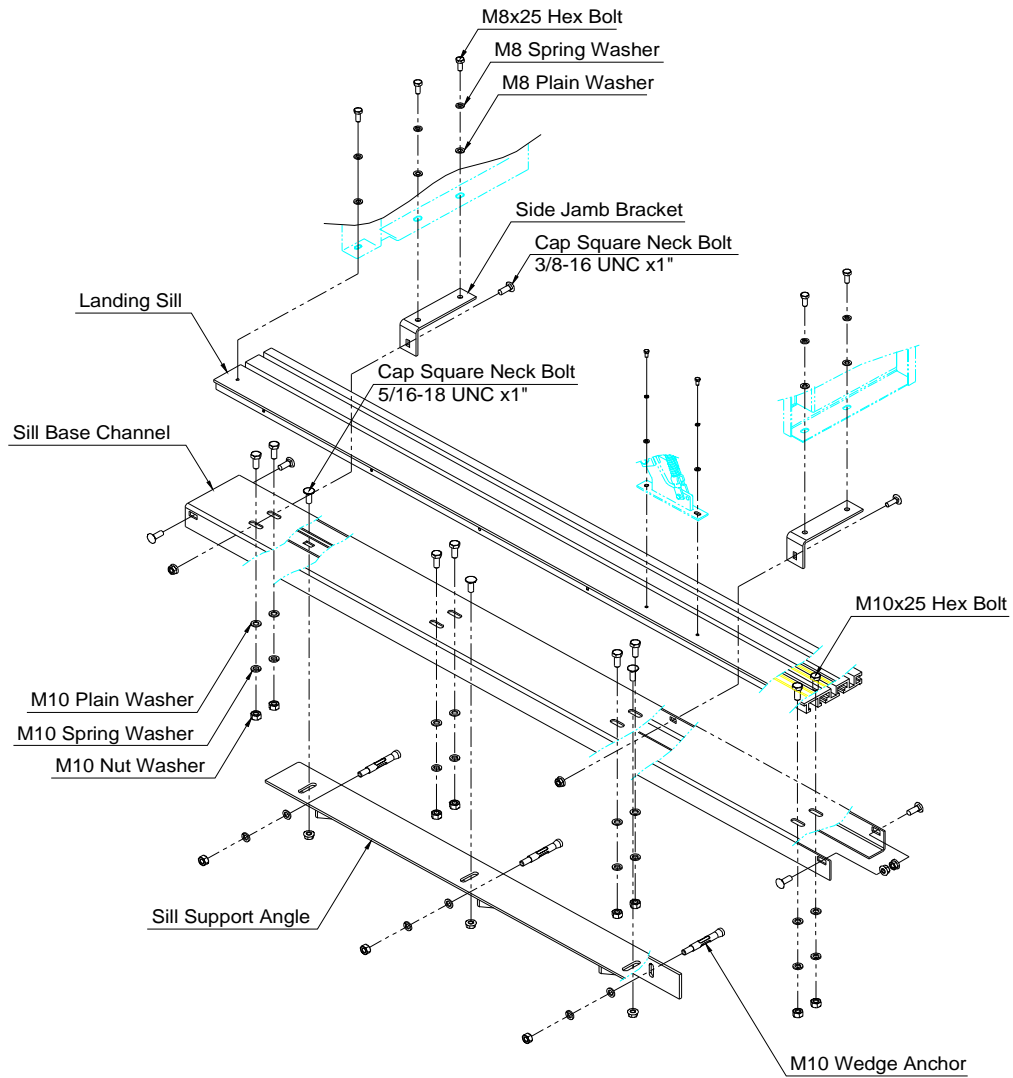
6-3-1. Entrance Arrangement (See Fig. 6-3-1.)



**Fig. 6-3-1. LANDING DOOR ASSEMBLY (TWO SPEED)**

<b>HM TEC</b>	<b>INSTALLATION MANUAL</b>	Document No.:	TN-M01-0001
		Date:	8-Jan-10
	<b>MRL - ENTRANCE ASSEMBLY</b>	Name:	N.R.Kim
		page:	6-15

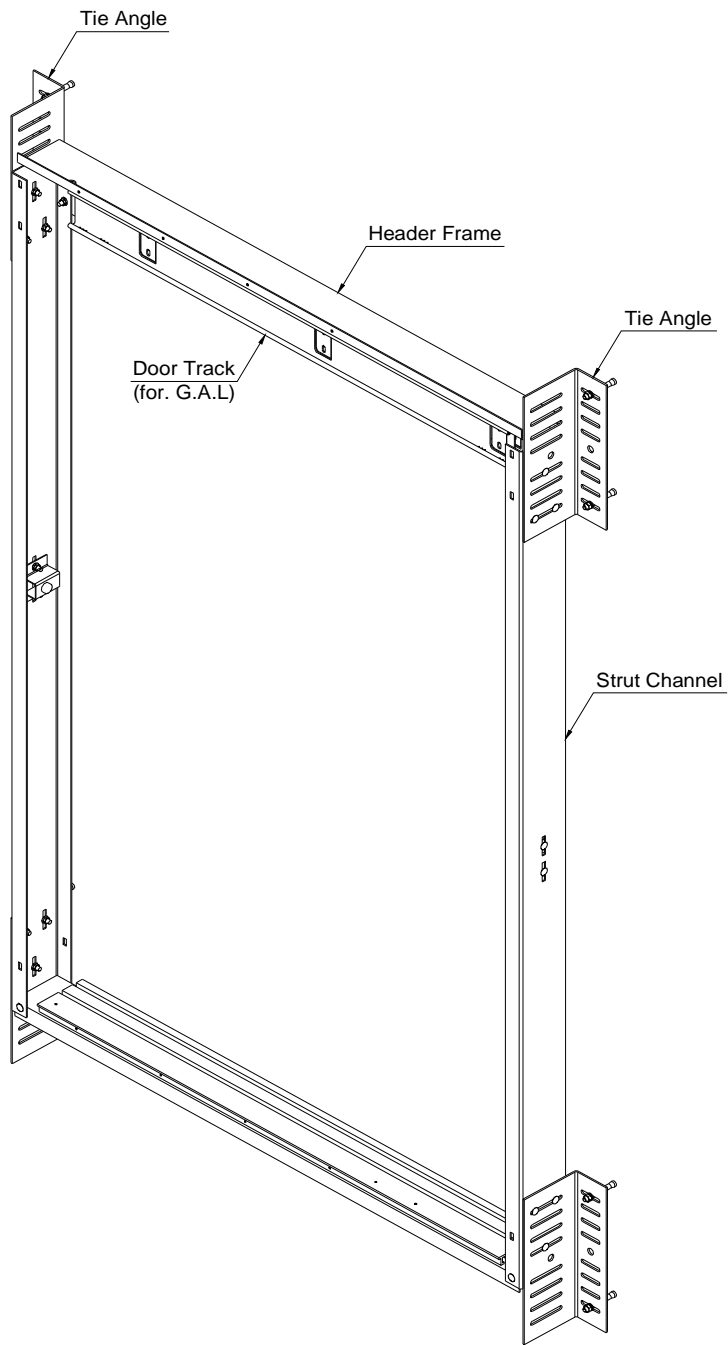
6-3-2. Landing Sill Assembly (See Fig. 6-3-2.)



**Fig. 6-3-2. LANDING DOOR ASSEMBLY (TWO SPEED)**

<b>HM TEC</b>	<b>INSTALLATION MANUAL</b>	Document No.:	TN-M01-0001
		Date:	8-Jan-10
	<b>MRL - ENTRANCE ASSEMBLY</b>	Name:	N.R.Kim
		page:	6-16

6-3-3. Strut and Header Frame Assembly (See Fig. 6-3-3.)

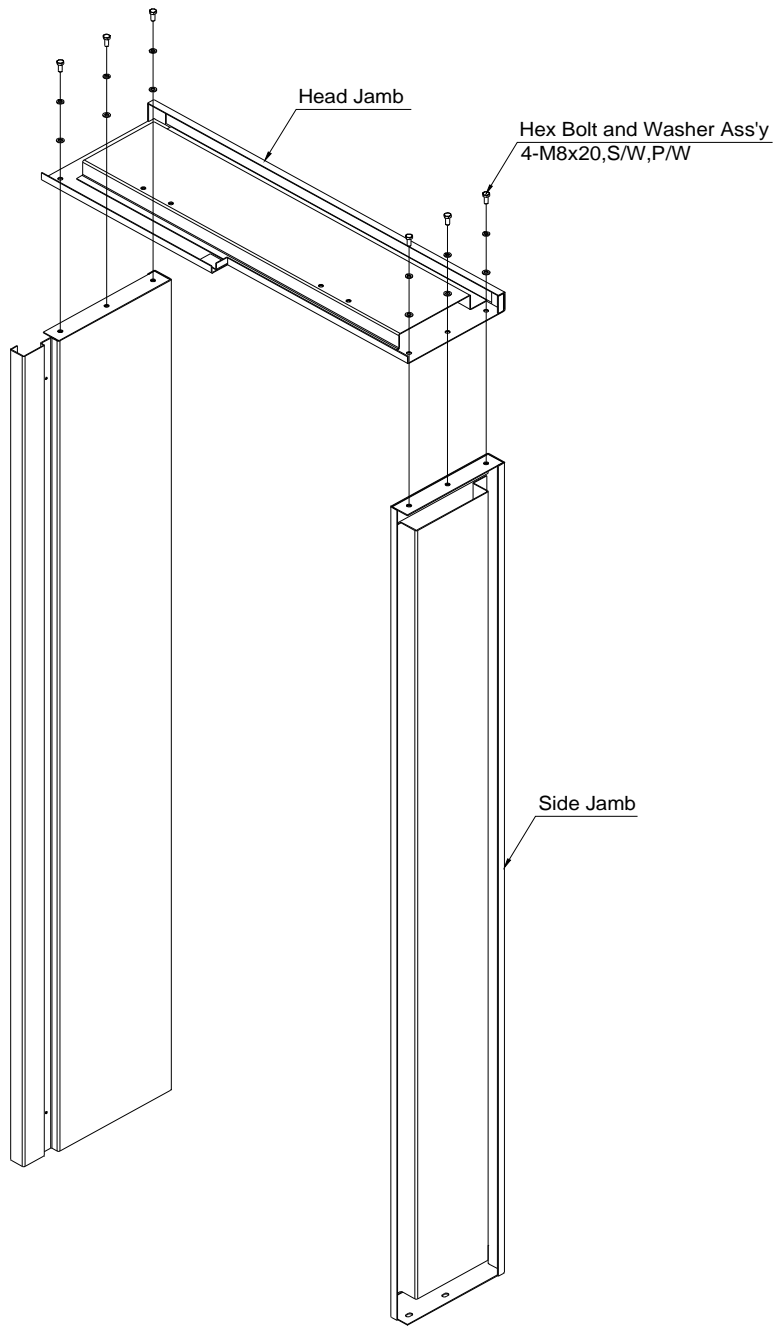


**Fig. 6-3-3. STRUT AND HEADER FRAME ASSEMBLY  
(TWO SPEED)**



<b>HM TEC</b>	<b>INSTALLATION MANUAL</b>	Document No.:	TN-M01-0001
		Date:	8-Jan-10
	<b>MRL - ENTRANCE ASSEMBLY</b>	Name:	N.R.Kim
		page:	6-17

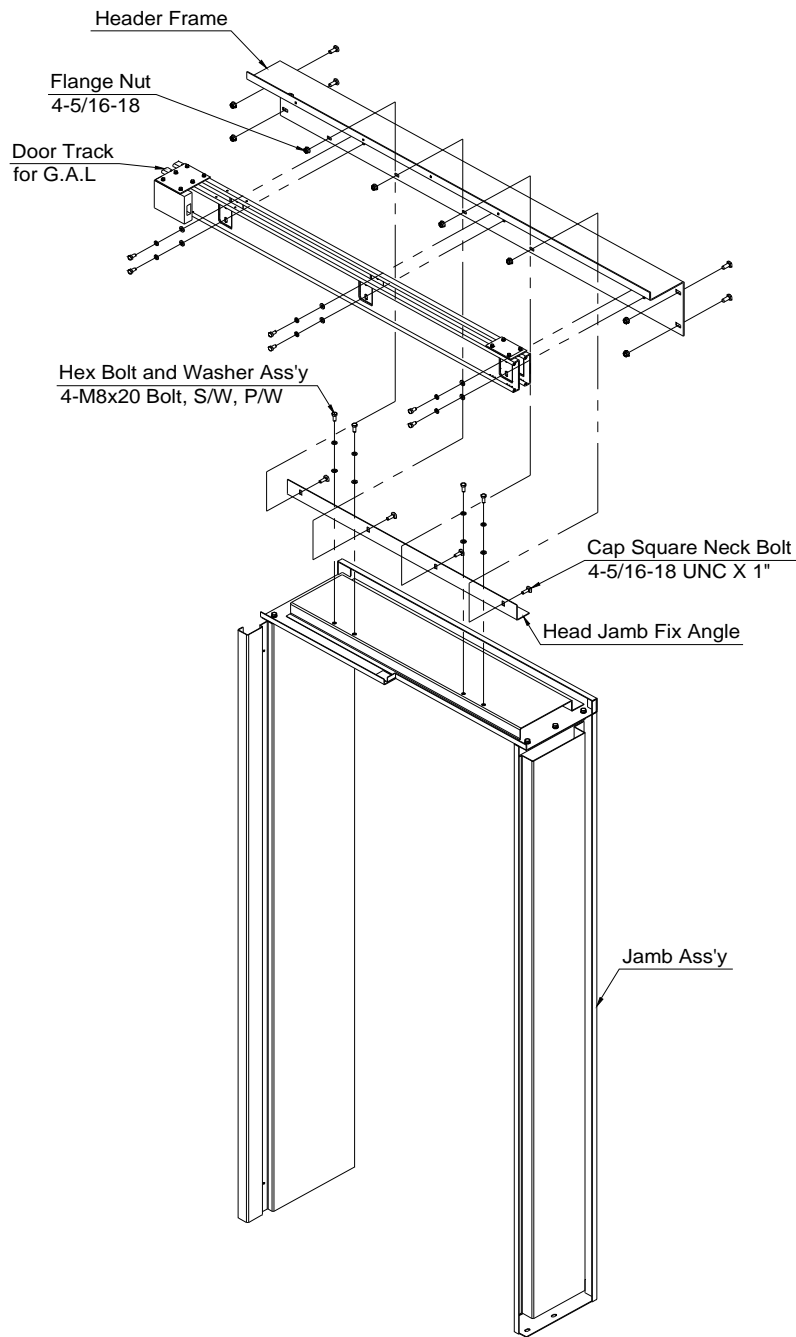
6-3-5. Jamb Assembly (See Fig. 6-3-5.)



**Fig. 6-3-5. JAMB ASSEMBLY (TWO SPEED)**

<b>HM TEC</b>	<b>INSTALLATION MANUAL</b>	Document No.:	TN-M01-0001
		Date:	8-Jan-10
	<b>MRL - ENTRANCE ASSEMBLY</b>	Name:	N.R.Kim
		page:	6-18

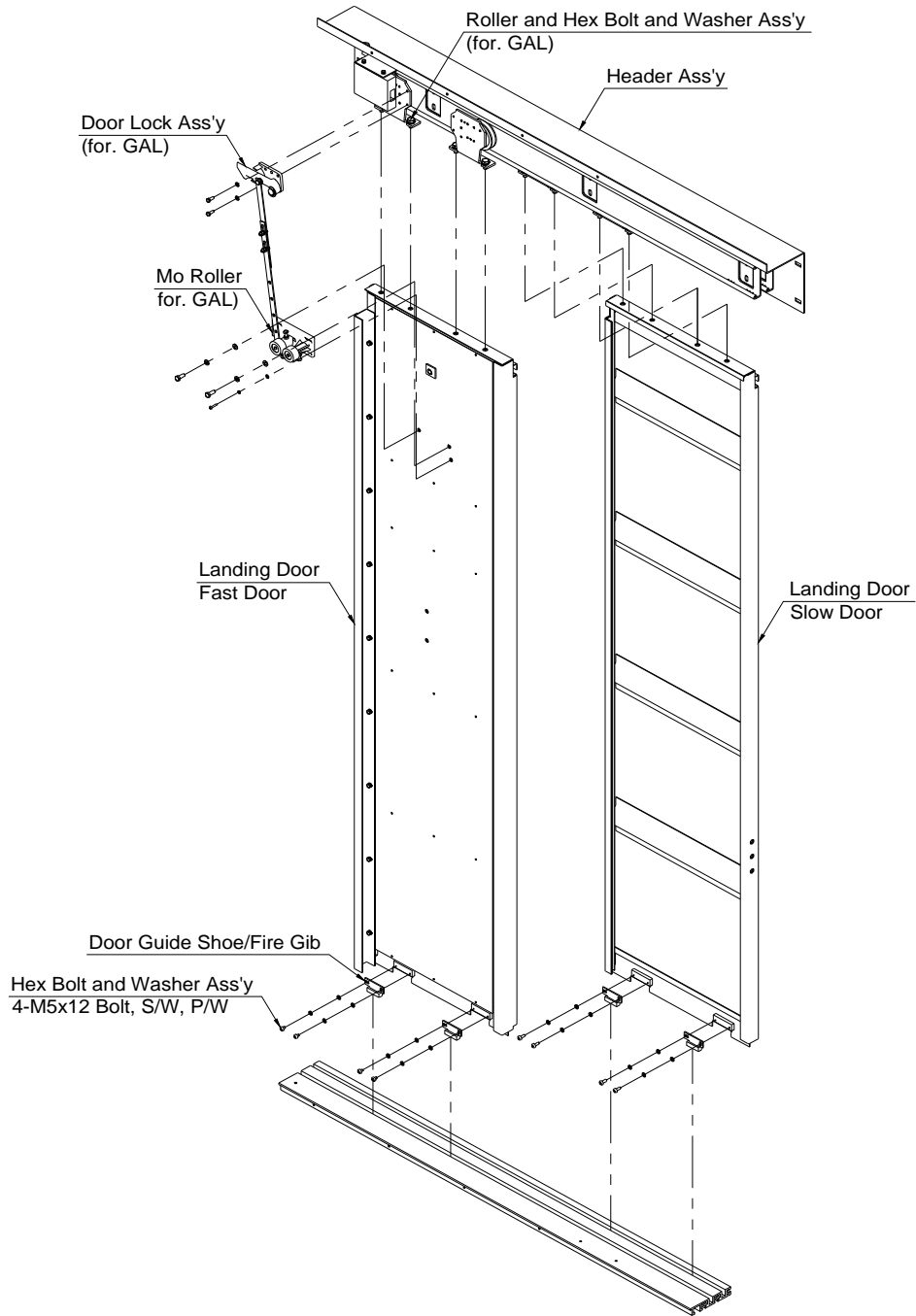
6-3-6. Header Frame and Jamb Fixing (See Fig. 6-3-6.)



**Fig. 6-3-6. HEADER FRAME AND JAMB FIXING (TWO SPEED)**

<b>HM TEC</b>	<b>INSTALLATION MANUAL</b>	Document No.:	TN-M01-0001
		Date:	8-Jan-10
	<b>MRL - ENTRANCE ASSEMBLY</b>	Name:	N.R.Kim
		page:	6-19

6-3-7. Landing Door Assembly (See Fig. 6-3-7.)



**Fig. 6-3-7. LANDING DOOR ASSEMBLY (TWO SPEED)**