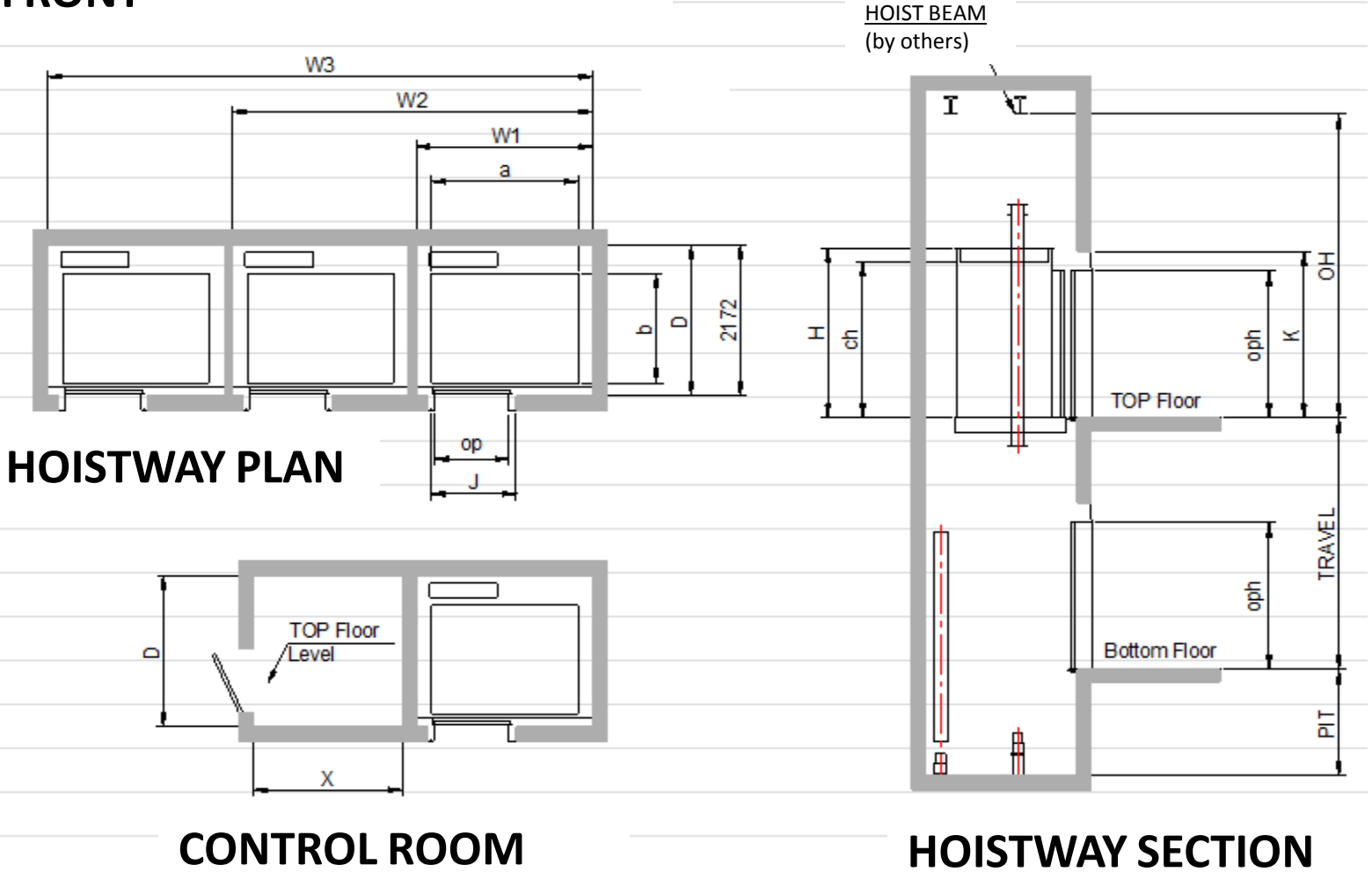


## FRONT

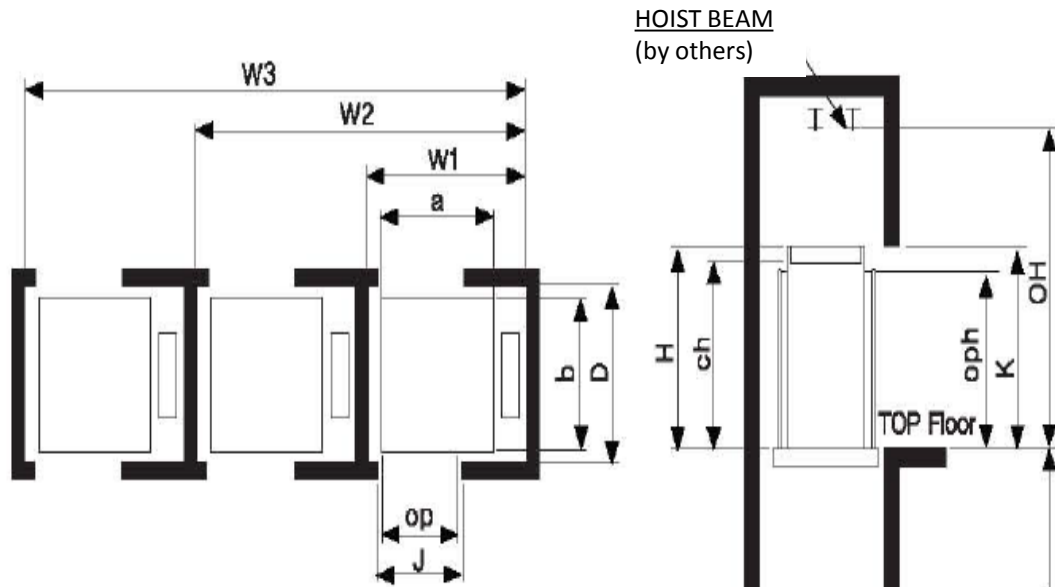


## FRONT OPENING

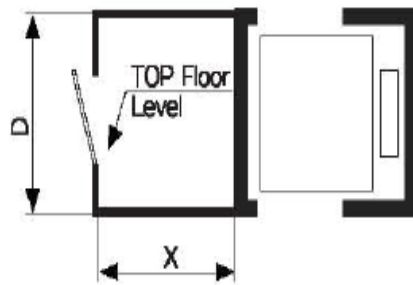
FRONT OPENING										
Type		Fork Type	Passenger elevator							
Rated lbs[Kg]		2100 [953]	2100 [950]	2500 [1134]	3000 [1361]	3500 [1588]	4000 [1814]	4000 [1814]	4500 [2041]	
Passenger Capacity		14	14	16	20	23	27	27	30	
Car										
a	Interior width	5'-8" [1728mm]	5'-8" [1728mm]	6'-8" [2032mm]	6'-8" [2032mm]	6'-8" [2032mm]	7'-8" [2336mm]	5'-8" [1728mm]	5'-8" [1728mm]	
b	Interior depth	4'-3" [1295mm]	4'-3" [1295mm]	4'-3" [1295mm]	4'-9" [1448mm]	5'-5" [1651mm]	5'-5" [1651mm]	7'-5" [2260mm]	7'-11" [2413mm]	
ch/H	Interior height/Cab height	7'-4" [2235mm] / 8'-0" [2435mm]								
op	Car door width	SS	3'-0" [914mm]	3'-0" [914mm]	3'-6" [1067mm]	3'-6" [1067mm]	3'-6" [1067mm]	---	---	---
		CP	---	---	3'-6" [1067mm]	3'-6" [1067mm]	3'-6" [1067mm]	4'-0" [1219mm]	---	---
		2S	---	---	---	---	---	---	4'-0" [1219mm]	4'-0" [1219mm]
Hoistway										
Width	W1 Single hoistway	✘ 7'-4" [2235mm]	7'-4" [2235mm]	8'-4" [2540mm]	8'-4" [2540mm]	8'-4" [2540mm]	8'-4" [2540mm]	9'-8" [2946mm]	8'-4 1/2" [2553mm]	8'-4 1/2" [2553mm]
		7'-7 1/2" [2324mm]								
	W2 Double hoistway	15'-7" [4750mm]	15'-0" [4572mm]	17'-0" [5182mm]	17'-2" [5232mm]	17'-2" [5232mm]	17'-2" [5232mm]	19'-2" [5842mm]	17'-3" [5258mm]	17'-3" [5258mm]
W3 Triple hoistway	23'-6 1/2" [7176mm]	22'-8" [6909mm]	25'-8" [7824mm]	26'-0" [7925mm]	26'-0" [7925mm]	26'-0" [7925mm]	29'-0" [8839mm]	26'-1 1/2" [7963mm]	26'-1 1/2" [7963mm]	
D	Depth	SS	5'-11 1/8" [1807mm]	6'-7 1/2" [2019mm]	6'-7 1/2" [2019mm]	7'-1 1/2" [2172mm]	7'-10" [2388mm]	---	---	---
		CP	---	---	6'-7 1/2" [2019mm]	7'-1 1/2" [2172mm]	7'-10" [2388mm]	7'-10" [2388mm]	---	---
		2S	---	---	---	---	---	---	9'-2 1/2" [2800mm]	9'-8 1/4" [2953mm]
J	Rough opening width	SS,CP	4'-5" [1346mm]	4'-5" [1346mm]	4'-11" [1498mm]	4'-11" [1498mm]	4'-11" [1498mm]	5'-5" [1651mm]	---	---
		2S	---	---	---	---	---	---	5'-5" [1651mm]	5'-5" [1651mm]
K	Rough opening height	7'-10" [2387mm]								
oph	Clear opening height	7'-0" [2134mm]								
OH	Overhead for (H=8'-0" [2435mm] car)	200FPM [1.0m/s]	16'-3 3/8" [4962mm]	14'-1 3/4" [4311mm]	14'-3 8/8" [4360mm]	14'-6 8/8" [4435mm]	14'-10 8/8" [4537mm]	17'-2 8/8" [5248mm]	17'-4" [5283mm]	
		300FPM [1.5m/s]	16'-9 5/8" [5121mm]	14'-7 1/8" [4448mm]	14'-9 1/8" [4499mm]	15'-0" [4572mm]	15'-4" [4673mm]	17'-8" [5384mm]	17'-9 3/8" [5419mm]	
		350FPM [1.75m/s]	17'-1" [5207mm]	14'-10" [4521mm]	14'-11 7/8" [4569mm]	15'-2 7/8" [4645mm]	15'-6 3/4" [4744mm]	17'-10 7/8" [5457mm]	18'-0 1/8" [5490mm]	
		400FPM [2.0m/s]	17'-5 1/4" [5314mm]	15'-4 1/2" [4687mm]	15'-9 1/2" [4813mm]	15'-9 1/2" [4813mm]	16'-0 3/4" [4896mm]	18'-6 7/8" [5661mm]	18'-8 3/4" [5709mm]	
		500FPM [2.5m/s]	18'-3 7/8" [5584mm]	16'-1 5/8" [4918mm]	16'-6 8/8" [5045mm]	16'-6 8/8" [5045mm]	16'-9 7/8" [5127mm]	19'-3 3/8" [5890mm]	19'-5 7/8" [5940mm]	
PIT	Pit depth	200FPM [1.0m/s]	5'-0" [1524mm]	✘	5'-0" [1524mm]			5'-4" [1625mm]		
		300FPM [1.5m/s]	5'-6" [1676mm]		5'-6" [1676mm]					5'-9 1/4" [1759mm]
		350FPM [1.75m/s]	5'-8" [1727mm]		5'-6" [1676mm]					5'-9 1/4" [1759mm]
		400FPM [2.0m/s]	6'-2" [1880mm]		6'-3 1/2" [1917mm]					6'-5 7/8" [1978mm]
		500FPM [2.5m/s]	6'-8" [2032mm]		7'-5 1/4" [2267mm]					7'-8 1/2" [2350mm]
Counterweight Location		Side Hand	Rear Hand				Side Hand			
Control Room										
X	Control room-Simplex		5'-0" [1524mm]							
	Control room-Duplex		7'-0" [2134mm]							
	Control room-Triple		9'-6" [2895mm]							

1. Increase overhead dimension respectively for higher cab over 8'-0".  
 2. Increase hoistway dimensions, width and depth for seismic application.  
 3. Note shall be applied for up to 2,100lbs/200fpm only (CWT guide is sliding shoe type)  
 4. 2SSO type entrance for passenger elevators from 2,500lbs to 4,000lbs is optional.

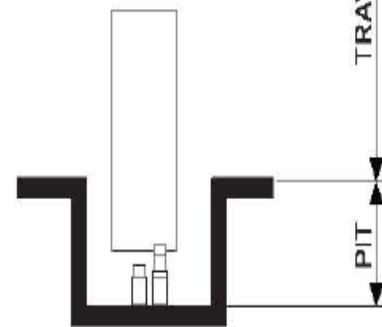
FRONT and REAR



HOISTWAY PLAN



CONTROL ROOM



HOISTWAY SECTION

Type			Passenger elevator					Hospital elevator			
Rated lbs[Kg]			2100 [953]	2500 [1134]	3000 [1361]	3500 [1588]	4000 [1814]	4000 [1814]	4500 [2041]		
Passenger Capacity			14	16	20	23	27	27	30		
<b>Car</b>											
a	Interior width		5'-8" [1728mm]	6'-8" [2032mm]	6'-8" [2032mm]	6'-8" [2032mm]	7'-8" [2336mm]	5'-8" [1728mm]	5'-8" [1728mm]		
b	Interior depth		4'-3" [1295mm]	4'-3" [1295mm]	4'-9" [1448mm]	5'-5" [1651mm]	5'-5" [1651mm]	7'-5" [2260mm]	7'-11" [2413mm]		
ch	Interior height		7'-4" [2235mm] / 8'-0" [2435mm]								
op	Car door width		SS	3'-0" [914mm]	3'-6" [1067mm]	3'-6" [1067mm]	3'-6" [1067mm]	---	---	---	
			CP	3'-0" [914mm]	3'-6" [1067mm]	3'-6" [1067mm]	3'-6" [1067mm]	4'-0" [1219mm]	---	---	
			2S	---	---	---	---	---	4'-0" [1219mm]	4'-0" [1219mm]	
<b>Hoistway</b>											
Width	W1 Single hoistway		8'-4" [2540mm]	9'-4" [2845mm]	9'-4" [2845mm]	9'-4" [2845mm]	10'-4" [3150mm]	8'-4 ½" [2553mm]	8'-4 ½" [2553mm]		
	W2 Double hoistway		17'-0" [5182mm]	19'-0" [5792mm]	19'-2" [5842mm]	19'-2" [5842mm]	21'-2" [6452mm]	17'-3" [5258mm]	17'-3" [5258mm]		
	W3 Triple hoistway		25'-8" [7824mm]	28'-8" [8739mm]	29'-0" [8839mm]	29'-0" [8839mm]	32'-0" [9754mm]	26'-1 ½" [7963mm]	26'-1 ½" [7963mm]		
D	Depth		SS	6'-8" [2032mm]	6'-8" [2032mm]	7'-2" [2184mm]	7'-10" [2388mm]	---	---	---	
			CP	6'-8" [2032mm]	6'-8" [2032mm]	7'-2" [2184mm]	7'-10" [2388mm]	7'-10" [2388mm]	---	---	
			2S	---	---	---	---	---	10'-4 ¾" [3160mm]	10'-10 ½" [3313mm]	
J	Rough opening width		SS,CP	4'-5" [1346mm]	4'-11" [1498mm]	4'-11" [1498mm]	4'-11" [1498mm]	5'-5" [1651mm]	---	---	
			2S	---	---	---	---	---	5'-5" [1651mm]	5'-5" [1651mm]	
K	Rough opening height		7'-10" [2387mm]								
oph	Clear opening height		7'-0" [2134mm]								
OH	Overhead for 8'-0" [2435mm] car		200FPM [1.0m/s]	16'-5 ¾" [5022mm]	16'-7 ¾" [5073mm]	16'-10 ⅝" [5147mm]	17'-2 ⅝" [5248mm]	17'-4" [5283mm]			
			300FPM [1.5m/s]	16'-11 ⅛" [5159mm]	17'-1 ⅛" [5210mm]	17'-4" [5283mm]	17'-8" [5384mm]	17'-9 ⅜" [5419mm]			
			350FPM [1.75m/s]	17'-2" [5232mm]	17'-4" [5283mm]	17'-6 ⅞" [5356mm]	17'-10 ⅞" [5457mm]	18'-0 ⅛" [5490mm]			
			400FPM [2.0m/s]	17'-10 ⅝" [5451mm]	18'-3 ½" [5575mm]	18'-3 ½" [5575mm]	18'-6 ⅞" [5661mm]	18'-8 ¾" [5709mm]			
			500FPM [2.5m/s]	18'-7 ⅞" [5680mm]	19'-0 ⅞" [5807mm]	19'-0 ⅞" [5807mm]	19'-3 ⅞" [5890mm]	19'-5 ⅞" [5940mm]			
PIT	Pit depth		200FPM [1.0m/s]	5'-0" [1524mm]				5'-4" [1625mm]			
			300FPM [1.5m/s]	5'-6" [1676mm]					5'-9 ¼" [1759mm]		
			350FPM [1.75m/s]	5'-6" [1676mm]					5'-9 ¼" [1759mm]		
			400FPM [2.0m/s]	6'-3 ½" [1917mm]					6'-5 ⅞" [1978mm]		
			500FPM [2.5m/s]	7'-5 ¼" [2267mm]					7'-8 ½" [2350mm]		
Counterweight Location			Side Hand								
<b>Control Room</b>											
X	Control room-Simplex		5'-0" [1524mm]								
	Control room-Duplex		7'-0" [2134mm]								
	Control room-Triple		9'-6" [2895mm]								

**NOTE**

1. Increase overhead dimension respectively for higher cab over 8'-0".
2. Increase hoistway dimensions, width and depth for seismic application.
3. 2SSO type entrance for passenger elevators from 2,500lbs to 4,000lbs is optional.