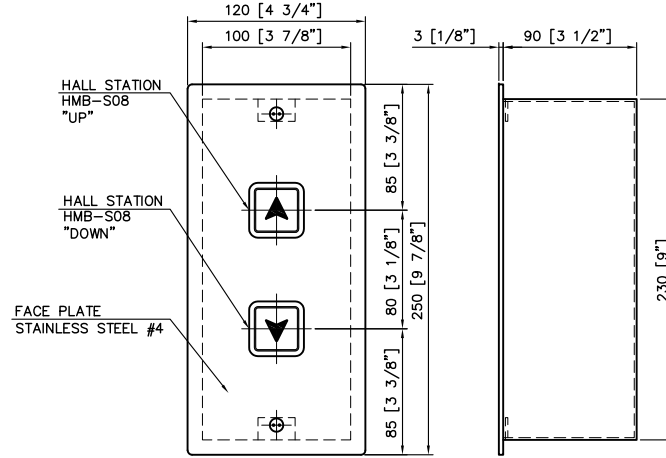
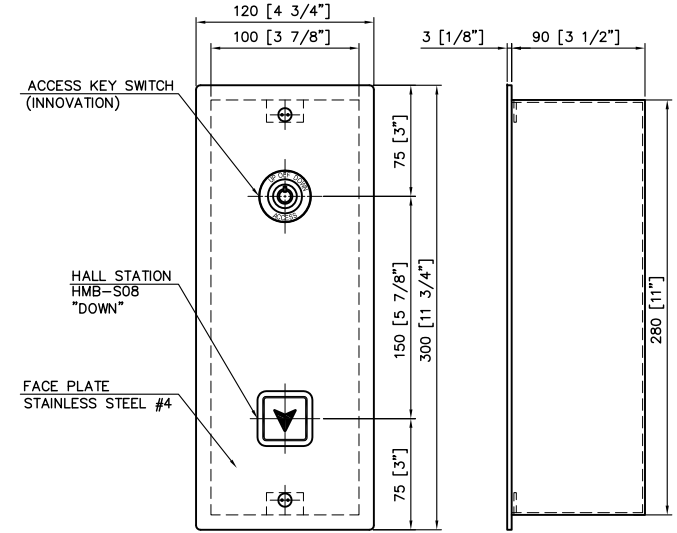


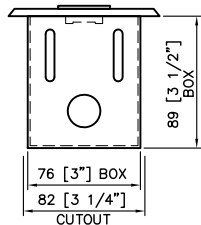
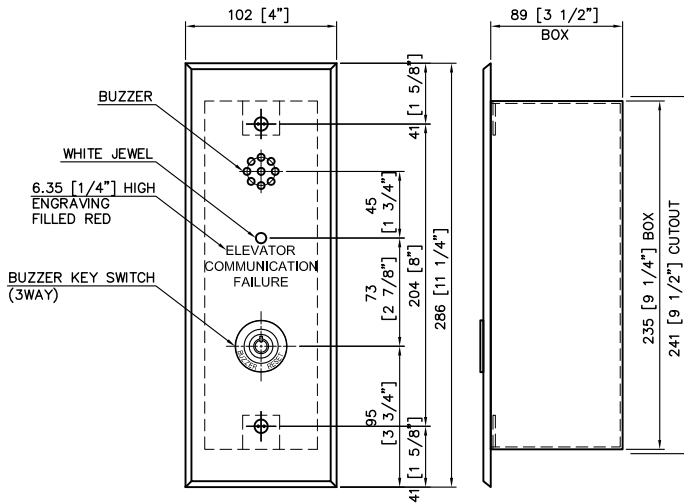
HALL BUTTON (HBM-001)
 BOTTOM TERMINAL FLOOR
 "1" FLOOR, QTY : 1 EA



HALL BUTTON (HBM-R41)
 INTERMEDIATE FLOOR
 "2,3,4" FLOORS, QTY : 3 EA



HALL BUTTON (HBM-R41)
 TOP TERMINAL FLOOR
 "5" FLOOR, QTY : 1 EA



COMMUNICATION (K-TECH/ENC124)
 BOTTOM TERMINAL FLOOR
 "1" FLOOR (ONLY), QTY : 1 EA

SPECIFICATIONS

MATERIAL :
 COVER - 1/8" [3t] W/ STAINLESS STEEL #4
 BOX - 1/16" [1.5t]. EGI
 SPANNER BOLT - M5 x 3/4" [20] SPANNER HEAD

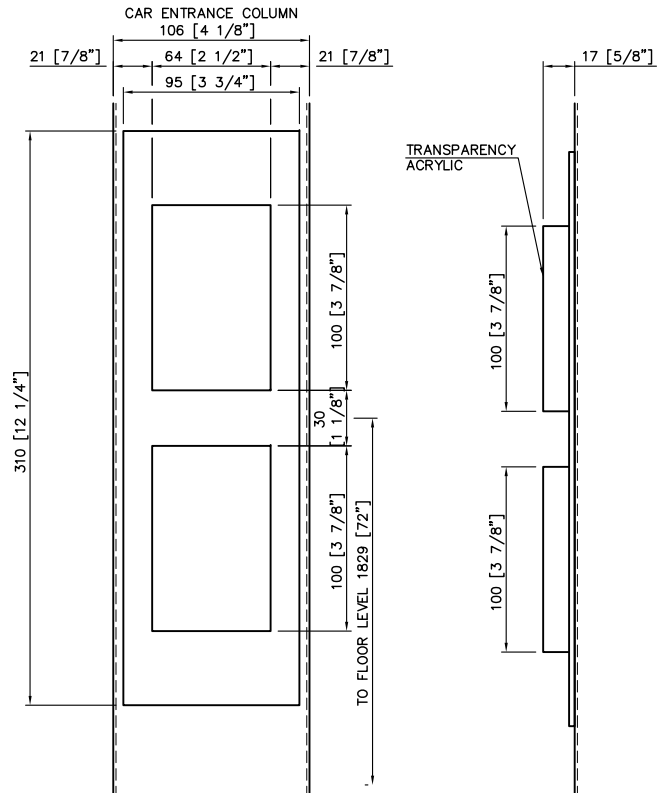
BUTTONS : HMB-S08 (RED ARROW)
 1 1/2" [37] DIA. STAINLESS STEEL BUTTON

KEY SWITCH :
 ACCESS - INNOVATION 025018-002
 1-3/8" [35] DIA. BLACK PLST INSERT, WHITE LETTERING.
 KEY REMOVABLE @ UP, OFF, DOWN
 SUPPLIED WITH 2 KEYS PER STATION

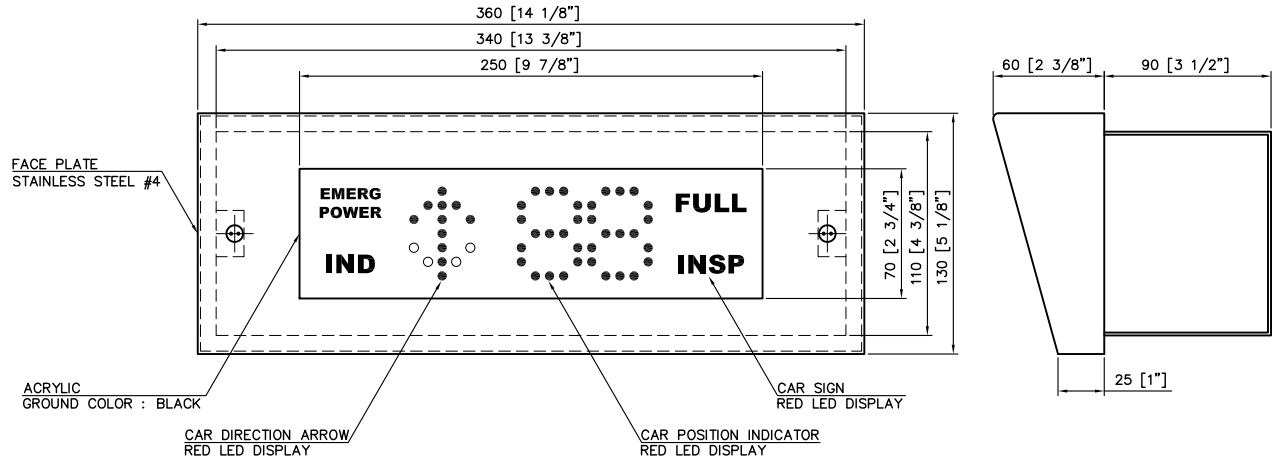
FIRE SERVICE :
 FIRE KEY SWITCH - Y-3502 (3 POSITIONS) MONITOR /
 1-3/8" [35] DIA. BLANK RED PLST INSERT,
 KEY REMOVABLE @ BYPASS, OFF, ON
 SUPPLIED WITH 2 KEYS PER STATION
 FIRE SERVICE JEWEL - 1 1/2" [37] WHITE PLST,
 RED ENGR

COMMUNICATION :
 COMMUNICATION ALARM - K-TECH / ENC124
 "1" FLOOR ONLY

ENGRAVING :
 1/4" [6] - RED - FIRE RECALL
 1/4" [6.35] - RED - ELEVATOR COMMUNICATION FAILURE



CAR LANTERN
 (HLI-003)
 Q'TY : 2 EA



HALL POSITION INDICATOR
 (HID-C001)
 "1" FLOOR, Q'TY : 1 EA

SPECIFICATIONS

MATERIAL :
 COVER - 1/8" [3t] W/ STAINLESS STEEL #4
 BOX - 1/16" [1.5t]. EGI
 SPANNER BOLT - M5 x 3/4" [20] SPANNER HEAD

LANTERN :
 2 1/2" [65] TRANSPARENCY ACRYLIC - SQUARE [A]
 GREEN COLOR LIGHT "UP"
 RED COLOR LIGHT "DOWN"

ACCESSORIES :
 DIG. READOUT - HID-C001, 2 3/4"H. DISPALY
 W/ STD. BLACK LENS