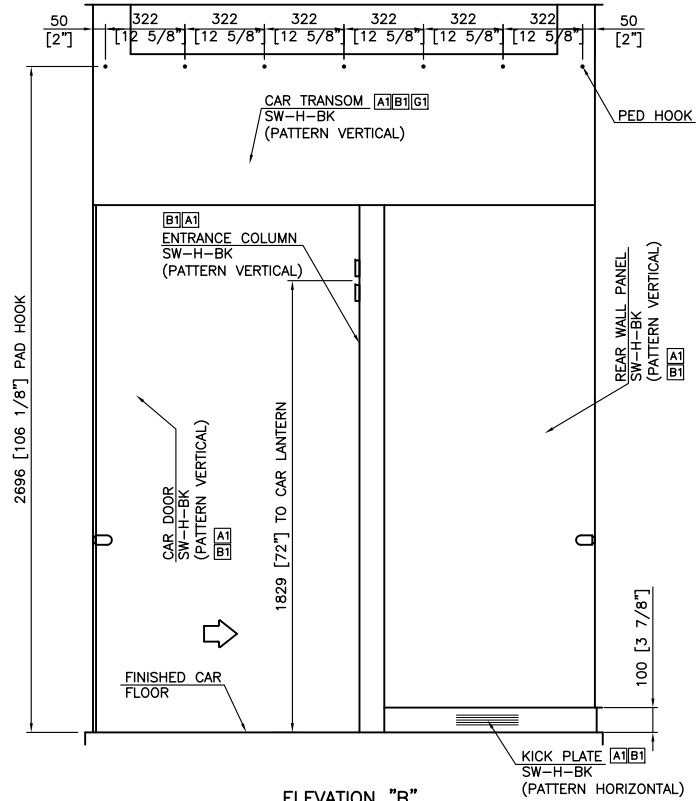
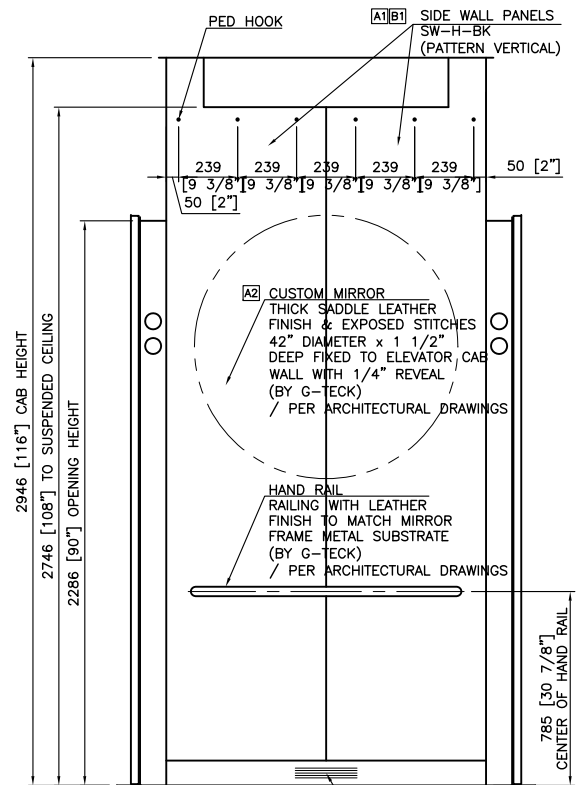


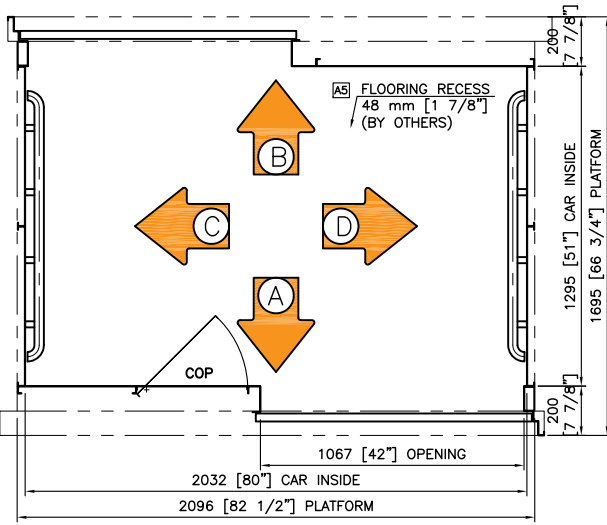
ELEVATION "A"
FRONT SIDE



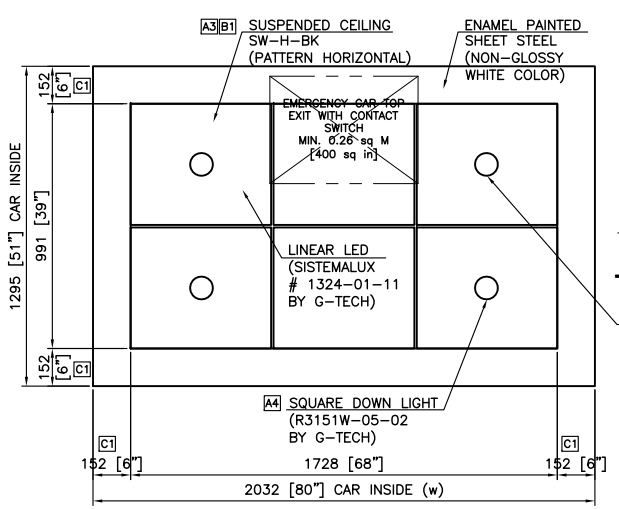
ELEVATION "B"
REAR SIDE



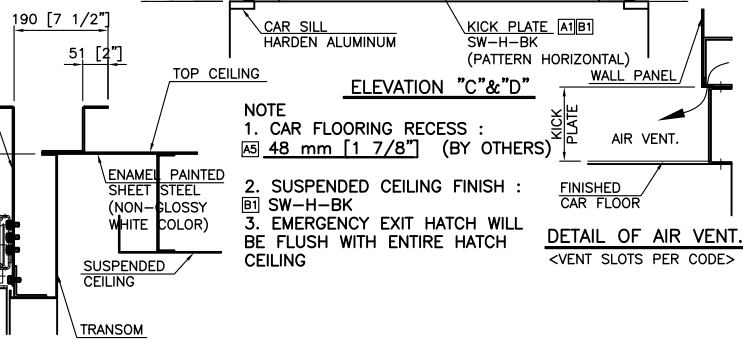
ELEVATION "C" & "D"



PLAN



SUSPENDED CEILING
(BY G-TECH) [B2][F1]



DETAIL OF CAR HEADER

- NOTE**
- CAR FLOORING RECESS : [A5] 48 mm [1 7/8"] (BY OTHERS)
 - SUSPENDED CEILING FINISH : [B1] SW-H-BK
 - EMERGENCY EXIT HATCH WILL BE FLUSH WITH ENTIRE HATCH CEILING
- DETAIL OF AIR VENT.**
<VENT SLOTS PER CODE>

FINAL DRAWINGS